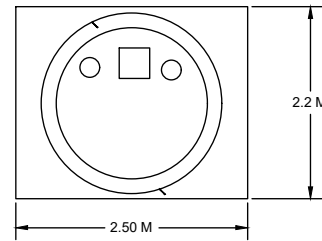


Latrine Pit (Circled 2 M diameter, 3.5 M depth):

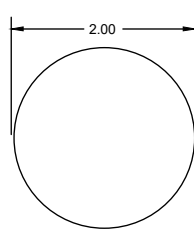
1. Excavations of 2 M diameter, depth 4.0 Meter.
2. Casting Bottom reinforced slab spacing 0.15 M, with 12mm rebar, 10 mm thickness of slab 1:2:4.
3. Brick lining above the bottom slab 3.4 M under ground, 0.3 M above the ground.
4. Casting top reinforced slab spacing 0.15 M, with 12mm rebar, 10 mm thickness of slab 1:2:4, Dimensions 2.5*2.2 Meter on the brick line walls, with Manhole void 0.4*0.4 Meter, and 02 ventilation voids with PVC pipes 3 meter long for each.
5. Curtain wall T shape parameter 4 Meter.



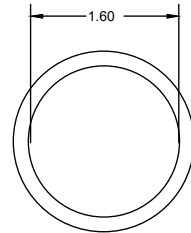
Top Slab Plan 2.5*2.2 Meter

Superstructure (1.5*2.5*2.4 M):

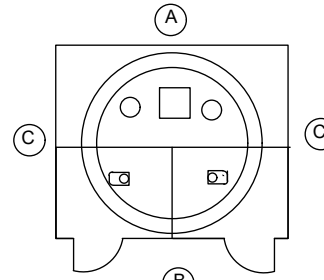
1. Poles made from angle bar 3 mm thick, 2in.
2. Walls fabricated from Zinc sheets Sudanese 0.35 mm 08 ft drilled on 03 lines of 6*3 Rectangular bars 0.1 mm thick.
3. Doors fabricated from zinc sheets 0.35 mm thick, with 6*3 Rec bars 0.1 mm thick with locks and accessories, with ramp and stairs.
4. Ventilation voids fabricated with mesh.



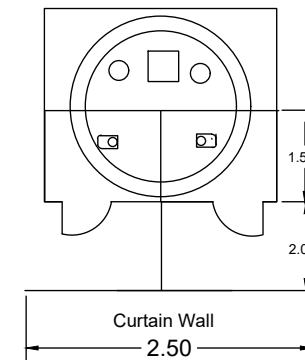
Pit Plan View



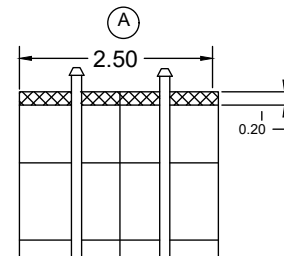
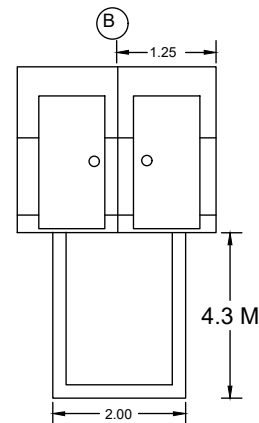
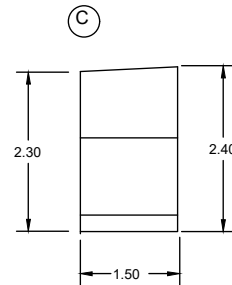
Pits Lining Plan View



Superstructure Plan



Curtain Wall
2.50



<p>Project Name: Proposed Site Layout for Proposed Semi-Permanent Latrine (02 stances)</p>	<p>Location: IDPs Gathering Cap at West Al-Gedaref, Wetren Gallabt and Al-Fashaga Localities</p>	<p>Drawn By: WASH & Infrastructure Team - DRC Gedaref</p>	<p>Checked&Approved by: Infrastructure Technical Coordinator</p>	<p>Date: November 2024</p>
---	---	--	---	---------------------------------------